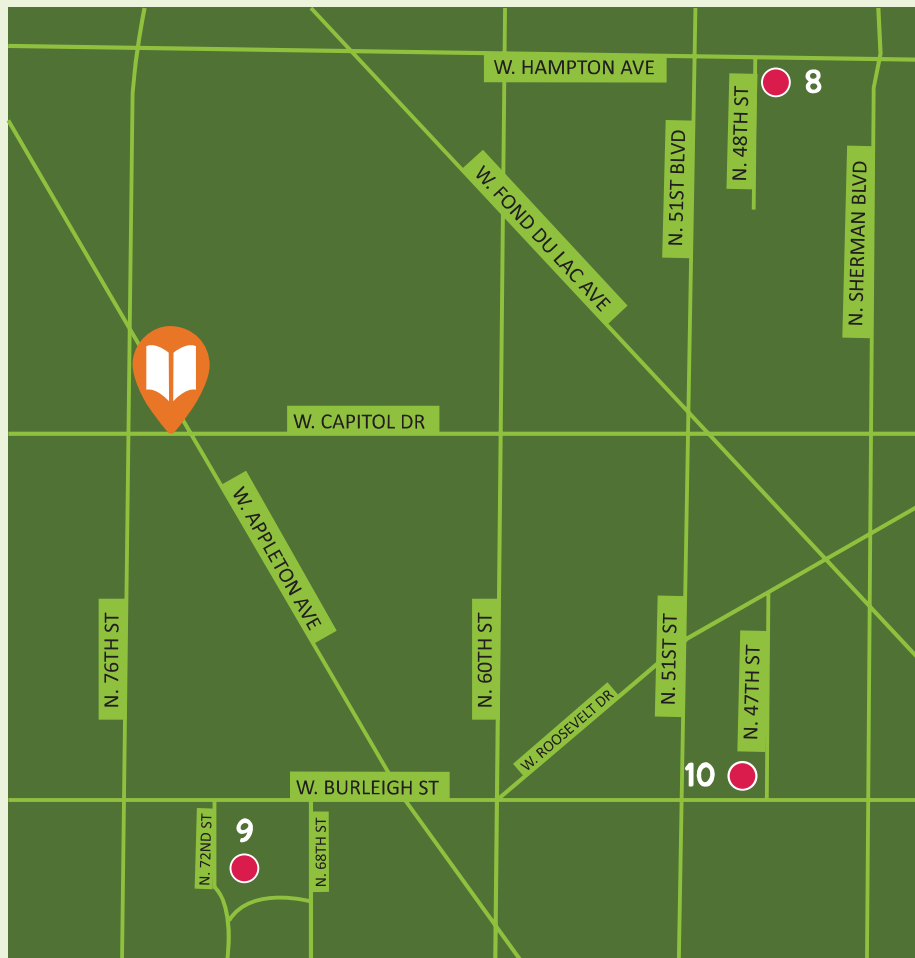


PUBLIC ART SCAVENGER HUNT

MPL Summer Reading | Read * Create * Discover | June 1 to August 31, 2022

📺 @MilwaukeePublicLibrary 📷 @MPLCreates & @TeensofMPL 📘 @Teens of Milwaukee Public Library

NEW!
LEVEL UP
ART
CHALLENGES



CAPITOL BRANCH

8. 4750 N. 48th St
9. 2938 N. 72nd St
10. 4716 W. Burleigh St

Challenge yourself to explore Milwaukee neighborhoods, art, and culture this summer.

READ: Track your time reading - books, audiobooks, magazines, and online articles...it all counts!

CREATE: Stop by all the Milwaukee Public Library branches this summer to participate in a variety of art making challenges. Each branch will be ready with a different project for you to try.

DISCOVER: Can you visit all the pieces of public art featured in the Milwaukee Public Library's Public Art Scavenger Hunt? Check out the locations listed on this paper to get started, then visit other Milwaukee Public Library branches to get a list of the awesome art to visit in their neighborhood.



Check in at any branch of the Milwaukee Public Library to get a free book and a bus ticket to help you read, get creative, and discover something new this summer!

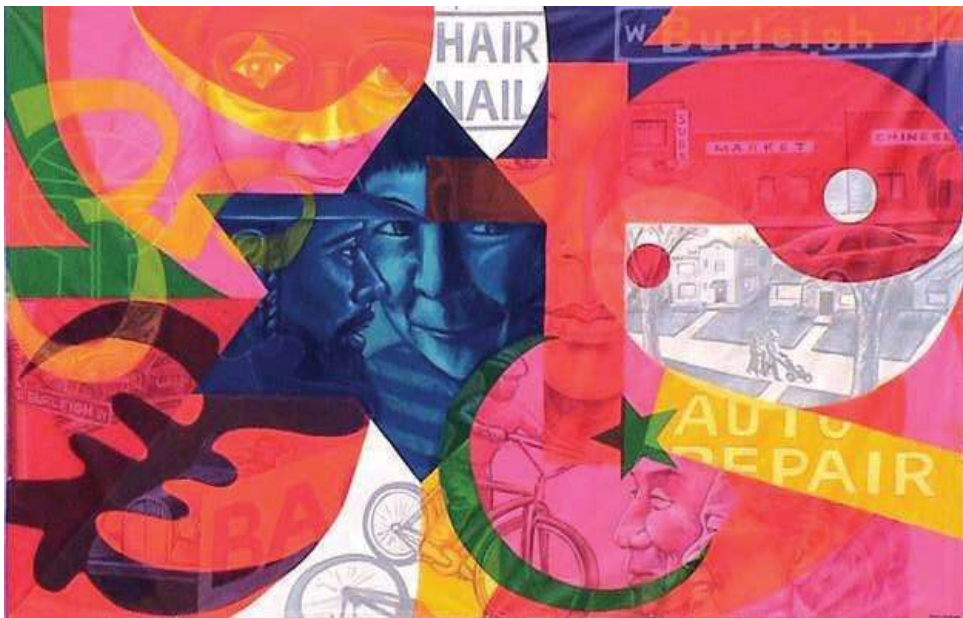
Sign up and start tracking online at [MPL.org/summerreading](https://mpl.org/summerreading).

Check out [MPL.org](https://mpl.org) & follow us online to learn about free events all summer long.

NEW!
LEVEL UP
ART
CHALLENGES

LEVEL UP ART CHALLENGE

Capitol Branch



Inspired by **the Mural on the Mosaic on Burleigh**. Find this artwork at **Site 10** in the Public Art Scavenger Hunt!

Join the hunt and do more **Level Up Art Challenges** at every library branch this summer!

Mosaic Drawing



A mosaic is pattern or image made of smaller objects usually like stone, glass or ceramics. The pieces of a mosaic are usually held in place and may cover the surface of a wall or ceiling.

Take about 10 shapes and arrange them on a sheet of paper to create your own mosaic. Complete your artwork with whatever materials you have on hand. Give your piece a title!

