



2019 Annual Report



1,661,128
patron visits across Milwaukee Central Library and all branch locations*

3,172,246 total circulation, including:



Traditional
1,941,264



Databases
495,062



eCirculation
408,043



Room Use
327,877



523,427
reference questions answered in person, by phone, chat, email, or post mailing

46,654

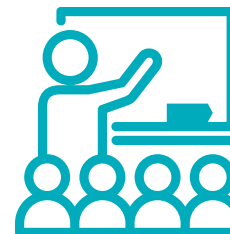
library card registrations, including:



New Users
13,960



Re-Registers
32,694



7,144
times library meeting spaces were reserved by community members



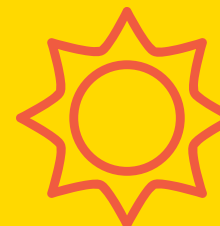
94,948
child, teen, and adult program attendees across 5,914 programs



752
adults met with for early literacy training & development



39
child care partnerships for ongoing deposit collections



26,236
child, teen, and adult Summer Reading Program participants -- our largest reach ever!

36,862 social media followers, including:



Facebook
16,761



Instagram
10,118



Twitter
7,916



Pinterest
1,779



1,156,122
Wi-Fi connectivity sessions with each device only counted once per day



336,237
times patrons made use of a desktop or laptop public computer

*No. 3 most-visited special attraction in Milwaukee for the 2018-2019 season in an article posted Oct. 2019 by Milwaukee Business Journal